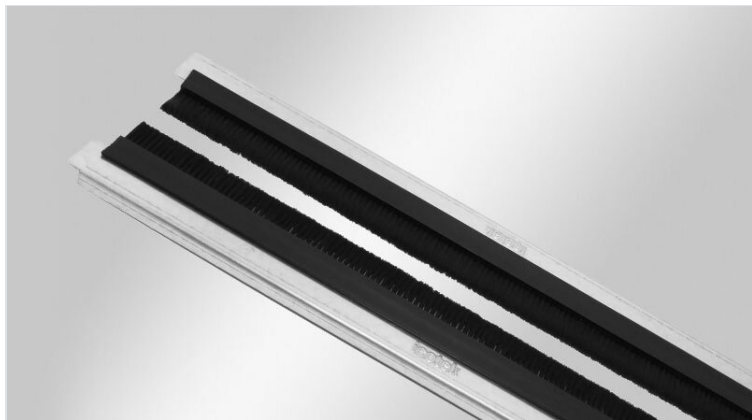


KDR-BES / KDRS-BES-U | Split base plates with brush strips

for Rittal TS 8 & VX25 enclosures



The 2-piece enclosure base plates are supplied with preassembled brush strips.

The gland plates are installed with standard Rittal clips / screws.

Depending on the maximum cable diameter to be routed, the 2 halves of the brush base plate are aligned further or closer to each other.

The base plates are perfect for protection of the enclosure interior against dirt.

RoHS
compliant

REACH
COMPLIANCE

Made in
Germany

Specifications

Material	Base plate: Steel, zinc plated Brushes: Polyamide
Operating temperature	-20 C° to 90 C°
Properties	silicone free, halogen free

Advantages & benefits

- During assembly, almost the complete base of the enclosure can be used for installation of cables
- Subsequent assembly possible

Product types & sizes

KDR-BES-TS8-600-58000



Part No.	58000	Sight size of	435 mm
EAN	4251269315787	base opening	
Package quantity	1	Suitable for enclosure	Rittal TS 8
Length	458 mm		
Width	125 mm		
Height	16 mm		
For enclosure width	600 mm		

KDR-BES-TS8-800-58006



Part No.	58006	Sight size of	635 mm
EAN	4251269315	base opening	
	794	Suitable for	Rittal TS 8
Package quantity	1	enclosure	
Length	658 mm		
Width	125 mm		
Height	16 mm		
For enclosure width	800 mm		

KDR-BES-TS8-1000-58012



Part No.	58012	Sight size of	835 mm
EAN	4251269315	base opening	
	800	Division bar	no
Package quantity	1	Suitable for	Rittal TS 8
		enclosure	
Length	858 mm		
Width	125 mm		
Height	16 mm		
For enclosure width	1.000 mm		

KDR-BES-TS8-1200-58018

Part No.	58018	Sight size of	495 mm
EAN	4251269315	base opening	
	817	Suitable for	Rittal TS 8
Package quantity	1	enclosure	
Length	518 mm		
Width	125 mm		
Height	16 mm		
For enclosure width	1.200 mm		



KDRS-BES-U-VX25-1000 (50mm)

Part No.	58032	Division bar	yes
EAN	4251269328	Brush height	50 mm
	923	For wall thickness	2,5 - 3 mm
Package quantity	1	Suitable for enclosure	Rittal VX25
Length	438 mm		
Width	16 mm		
For enclosure width	1.000 mm		
Sight size of base opening	402 mm		



KDRS-BES-U-VX25-1200 (50mm)



Part No.	58033	Division bar	yes
EAN	4251269328	Brush height	50 mm
	930	For wall thickness	2,5 - 3 mm
Package quantity	1	Suitable for enclosure	Rittal VX25
Length	538 mm		
Width	16 mm		
For enclosure width	1.200 mm		
Sight size of base opening	502 mm		

KDRS-BES-U-VX25-600 (50mm)



Part No.	58030	Brush height	50 mm
EAN	4251269328	For wall thickness	2,5 - 3 mm
	909	Suitable for enclosure	Rittal VX25
Package quantity	1		
Length	488 mm		
Width	16 mm		
For enclosure width	600 mm		
Sight size of base opening	452 mm		

KDRS-BES-U-VX25-800 (50mm)

Part No.	58031	Brush height	50 mm
EAN	4251269328	For wall thickness	2,5 - 3 mm
Package quantity	1	Suitable for enclosure	Rittal VX25
Length	688 mm		
Width	16 mm		
For enclosure width	800 mm		
Sight size of base opening	652 mm		



icotek[®]
smart cable management